



window systems



# CONTENT

Welcome to the world of KATZBECK,  
the Austrian specialist for woodaluminium and wood windows and doors!  
You can live everywhere – but Katzbeck makes you feel at home!



## 04-05 **FUTURE VALUES**

Katzbeck, the specialist for woodaluminium and wood windows, stands for the preservation of the environment throughout all of its branches.



woodaluminium

## 06-11 **DESIGN**

DESIGN, the innovative woodaluminium window from our own research and development department combines high quality design, maximum energy efficiency, the highest level of safety and extraordinary comfort.



woodaluminium

## 16-21 **LINEA**

Contemporary architecture calls for clarity and straight-forwardness. Katzbeck honors these requirements through its new LINEA window innovation.



woodaluminium

## 26-31 **COMBINA / COMBINApassiv**

The special thickness of wood and the high stability of the sashes, window frames, and fittings provide the strongest arguments of the COMBINA window system. They warrant a safe, cosy and comfortable home.

wood

## **MASSIVA / MASSIVApassiv** 36-41

Even stronger and sturdier – featuring solid wood thickness MASSIVA stands for highest stability and safety.



woodaluminium and wood

## **LIFTING-SLIDING DOORS** 46-47

Contemporary architecture brings nature into the living quarters through extensive glass surfaces. Window/Door elements reaching from the ground to the ceiling that can be slid aside completely ensure a flowing transition between inside and outside.



woodaluminium

## **NURA** 52-53

Large glass surfaces meet the demand of more sun, light, and nature being present within living spaces. NURA represents the brand new development of a full glass system which enables the fulfillment of this dream.





# FUTURE VALUES



## FOR A CLEAR ECOLOGICAL CONSCIENCE

Katzbeck, the specialist for woodaluminium and wood windows, stands for the preservation of the environment throughout all of its branches.

The basic material for our products is high quality wood, a natural and renewable resource. Throughout our production facilities, sophisticated technology is responsible for the ideal attuning of the individual manufacturing steps, ensuring that neither material nor energy is wasted.

Our on-time delivery is based on a smart logistics plan that coordinates all delivery routes, preventing any excess truck mileage. We thereby reduce transportation routes and preserve the environment and the climate.

Furthermore, the quality products made by Katzbeck are characterised by their longevity, which is not only easy on our customers' wallets, but especially on the natural resources.

## INDOOR FEEL-GOOD COMFORT & CLIMATE PROTECTION WITH WOOD

Wood is natural, looks good and feels good. But wood offers more than that: It is a natural material and as such it combines flexibility in designing with outstanding technical properties and advantages for building biology.

In addition wood is the most sustainable construction material. It grows continuously, the energy

needed for processing is low and does not generate leavings which are environmentally harmful. Wood is available for generations to come and returns at the end into the natural cycle again. Everyone who is using local wood for building construction is not only doing something positive for himself but also for nature and environment.



Wood is one of the most precious raw materials for Katzbeck. We don't accept illegally harvested wood but demand high standards to increase the availability of wood certified by FSC (Forest Stewardship Council).

## WELL BUILT: THE WOOD RANGE BY KATZBECK

### Spruce

The serene growth and the harmonious coloring exude a natural comfort. Furthermore, spruce scores through perfect heat insulation, high stability, and excellent processing characteristics.

### Larch

The high resin percentage as well as other natural contents make larch one of the most durable types of wood around. This is the reason man has produced especially resistant components out of this material for centuries - and Katzbeck uses it to manufacture windows and doors.

### Oak

The classic timeless look of the indestructible oak wood is suited excellently for rustic country cottages as well as for contemporary straightforward buildings. Therefore, this type of wood is experiencing a well-deserved revival.



STRAIGHT-FORWARD DESIGN

VISIBLE

BRIGHT AND FLOODED WITH LIGHT

PERCEPTIBLE

SUPERB THERMAL INSULATION

USABLE

## DESIGN

DESIGN, the innovative woodaluminium window from our own research and development department combines high quality design, maximum energy efficiency, the highest level of safety and extraordinary comfort. Remarkable details, top-of-the-line appearance and state-of-the-art technology make DESIGN the frontrunner of sophisticated architecture. The very slim wood elevation increases the glazing surface and improves the thermal protection value of the window. The result: bright, open and rooms suffused with light.

The revolutionary, micro-foam sealant increases longevity and durability and improves soundproofing and thermal protection. Katzbeck – the specialist for woodaluminium and wood windows.

Design is  
thinking  
made  
visual.

Saul Bass, Designer





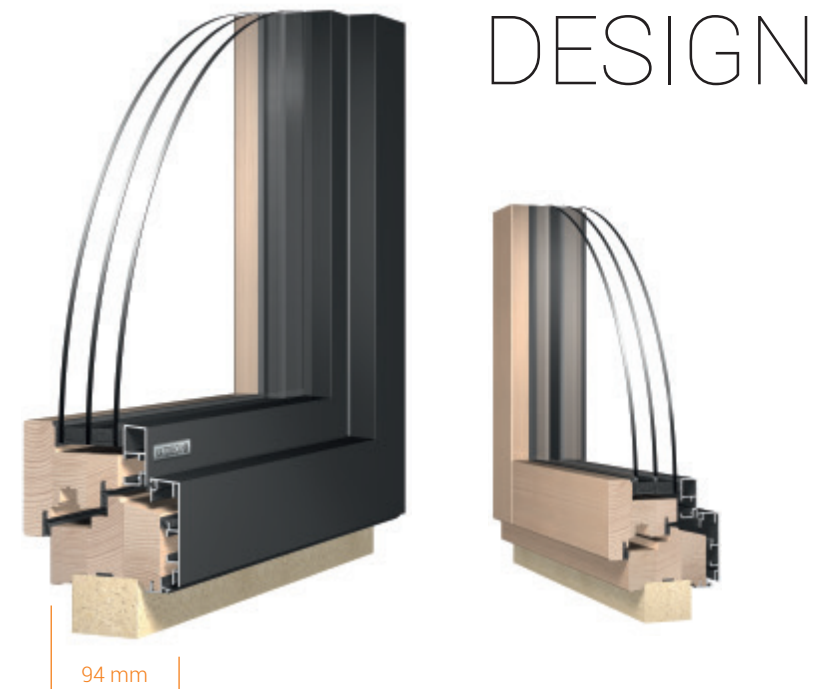


SOPHISTICATED





Modern design without compromises: Katzbeck orientated itself on the pioneering living trends of elevated architecture during the development of DESIGN. The windows are exciting due to the features of straight-forward design, especially large glazing and perfect technology.



## Window Values according to Standards

BestValue triple-glazing  $U_w 0,75$



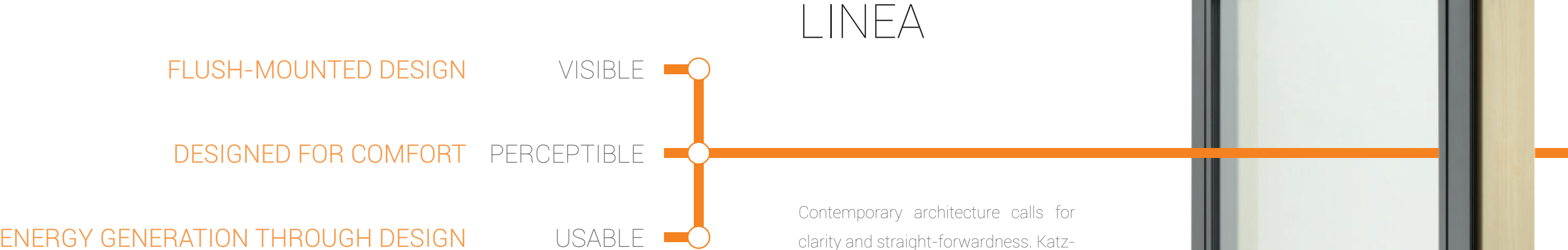












# LINEA

Contemporary architecture calls for clarity and straight-forwardness. Katzebeck honors these requirements through its new LINEA window innovation – a flush-mounted woodaluminium window that serves as a design object in and of itself.

The flush-mounted window system for contemporary architecture represents high-quality looks, exceptional longevity, and maximum energy efficiency. The sashes and frame line up with the wall in one, thereby providing each room with a clear, contemporary feeling. The slender wood profile and the enlarged glass surfaces facilitate rooms flooded with light and provide for unique views.



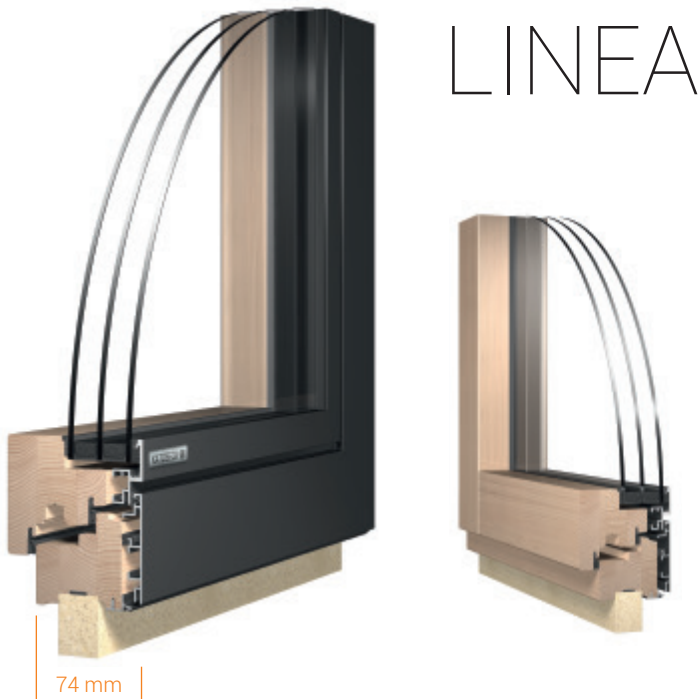








Moderne architecture calls for clarity and straight-fowardness. This demand is met through the LINEA innovation of windows by Katzbeck – a flush-mount woodalu-minium window which presents itself as a design object.



### Window Values according to Standards

BestValue    triple-glazing     $U_w 0,82$















## COMBINA COMBINApassiv

The special thickness of wood and the high stability of the sashes, window frames, and fittings provide the strongest arguments of the COMBINA window system. They warrant a safe, cosy and comfortable home. Both models are suitable for passive houses, i.e. they are in accordance with the high thermal protection standards required for energy efficient construction.

COMBINApassiv represents the strongest woodaluminium window of the Katzbeck product range, featuring a frame thickness of 111mm and standard triple glazing. Therefore, the woodaluminium and wood window specialist provides a good feeling along with a long-term effect.



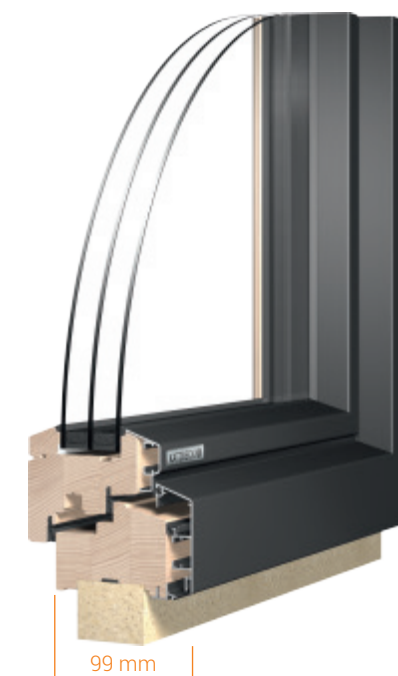








The strongest woodaluminium window by Katzbeck combines ideal weather resistance with warmth and cosiness. The COMBINA window system – suitable for passive houses – is a persuasive piece of craftsmanship due to top-of-the-line thermal insulation, a standard burglar arrest system and many further advantages.

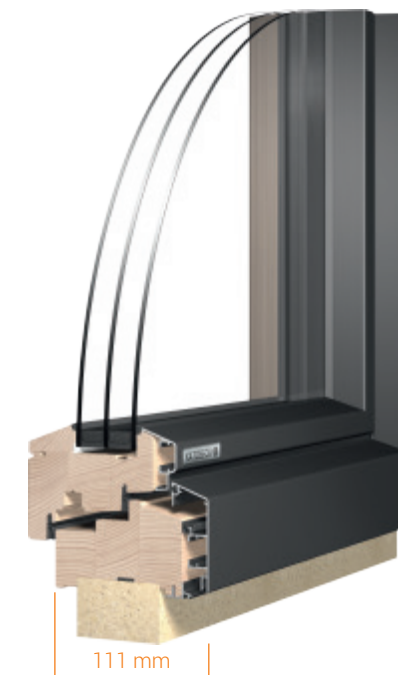


## COMBINA



### Window Values according to Standards

BestValue triple-glazing  $U_w 0,75$



## COMBINA*passiv*



### Window Values according to Standards

BestValue triple-glazing  $U_w 0,71$











CLASSIC ELEGANCE

IN HARMONY WITH NATURE

SUSTAINABLE FOR GENERATIONS

VISIBLE

PERCEPTIBLE

USABLE

## MASSIVA MASSIVA*passiv*

Even stronger and sturdier – featuring solid wood thickness MASSIVA stands for highest stability and safety. Suitable for passive homes, the “toughest” innovation by Katzbeck – the specialist for woodaluminium and wood windows – is convincing through its 100 percent natural insulation. Burglary arrest details and very high stability of the casements, frames, and fittings, as well as extraordinarily strong laminated safety glass create a feeling of absolute security within your own home for a very long time; Katzbeck stands for longevity with 65 years of experience and quality.











This innovation by Katzbeck is proof of true power: the "Hercules" amongst wood windows leaves its solid mark on stability, safety, and natural heat insulation through especially high frame thicknesses.



# MASSIVA



Window Values according to Standards

BestValue triple-glazing Uw 0,75



# MASSIVApassiv



Window Values according to Standards

BestValue triple-glazing Uw 0,71











IN CLOSE TOUCH WITH NATURE

UNLIMITED FREEDOM

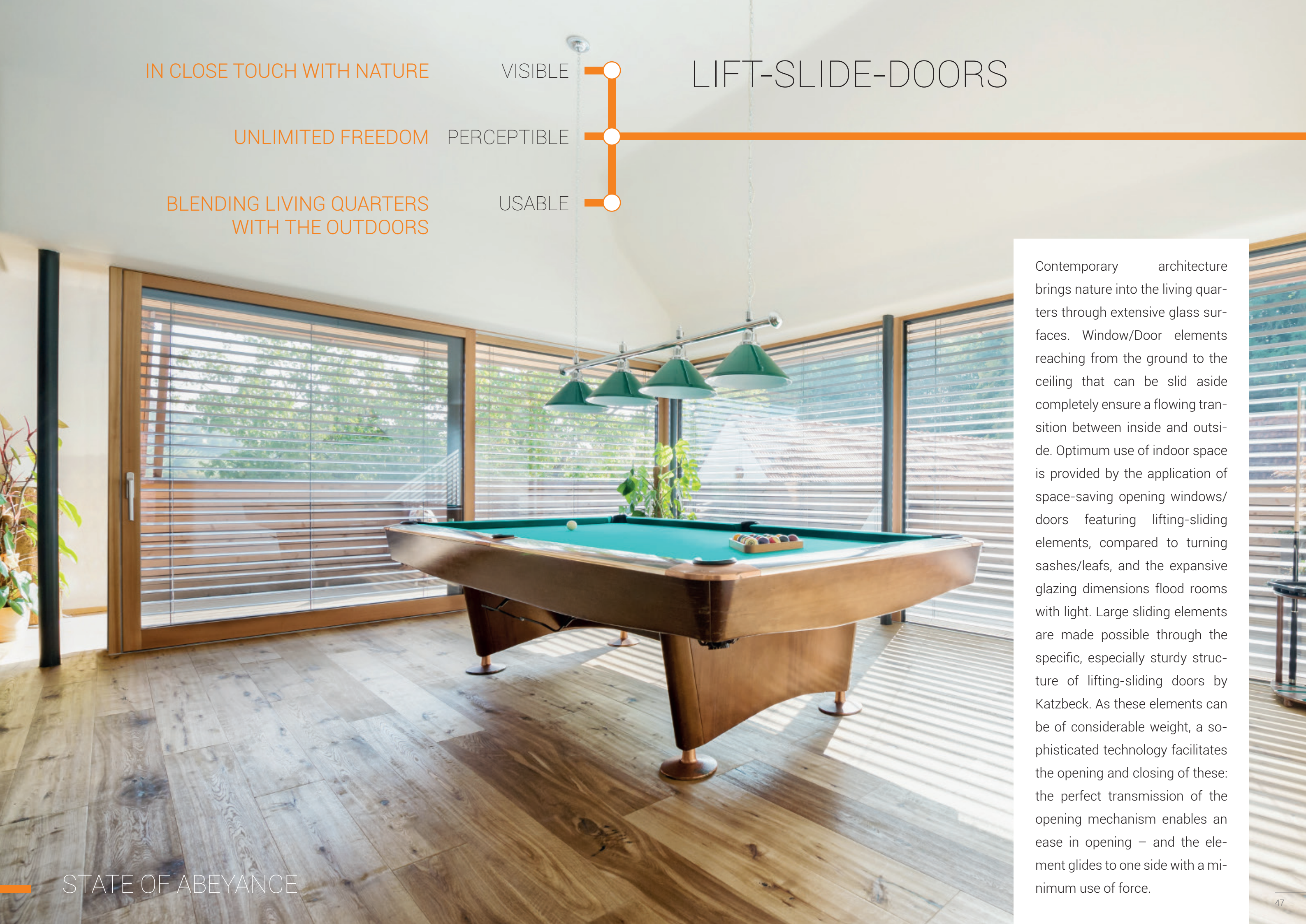
BLENDING LIVING QUARTERS  
WITH THE OUTDOORS

VISIBLE

PERCEPTIBLE

USABLE

# LIFT-SLIDE-DOORS



Contemporary architecture brings nature into the living quarters through extensive glass surfaces. Window/Door elements reaching from the ground to the ceiling that can be slid aside completely ensure a flowing transition between inside and outside. Optimum use of indoor space is provided by the application of space-saving opening windows/doors featuring lifting-sliding elements, compared to turning sashes/leafs, and the expansive glazing dimensions flood rooms with light. Large sliding elements are made possible through the specific, especially sturdy structure of lifting-sliding doors by Katzbeck. As these elements can be of considerable weight, a sophisticated technology facilitates the opening and closing of these: the perfect transmission of the opening mechanism enables an ease in opening – and the element glides to one side with a minimum use of force.

STATE OF ABEYANCE











FULL GLASS DESIGN

VISIBLE

NURA

MORE OPEN SPACE, MORE NATURE

PERCEPTIBLE

CAN BE COMBINED WITH  
WINDOW AND DOORS SYSTEMS

USABLE

Large glass surfaces meet the demand of more sun, light, and nature being present within living spaces. NURA represents the brand new development of a full glass system which enables the fulfillment of this dream. Upon request, this window can also be assembled featuring full glass corners and glass splices – transparent and flush-mounted glass-to-glass.



FULL GLASS DESIGN





Katzbeck, the Austrian specialists have now brought their experience and expertise in the manufacture and supply of high performance, high quality and innovative window and door systems to the UK with Katzbeck Windows & Doors Ltd. Now established as a reputable, customer focused company with supply partners and sales outlets throughout the UK, Katzbeck can supply a range of products to a range of projects including, refurbishment, renovation, new build and passive.

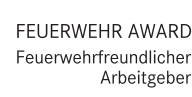


PHOTOS: CROCE, SCHROTTER, JEAN VAN LÜIK, KATZBECK

KATZBECK always stands for state-of-the-art technology.

Due to the constant further development of our program there may be changes and innovations made within our programs. We reserve the right to change models or any technical details.

This catalogue was created with the greatest accuracy; we reserve the right to any deviations in color, printing or semantic errors. **May 2015**







#### **KATZBECK advantages**

- Over 65 Years of Competence and Experience
- 6 Weeks Short Manufacturing Periods to the UK & On Time Delivery
- Highest Quality & Performance
- Sensational Heat Insulation & Energy Efficiency
- Professional Consulting, Planning and Customer Service



**+44 (0) 20 3005 3253**  
**[www.katzbeck-windows.co.uk](http://www.katzbeck-windows.co.uk)**